

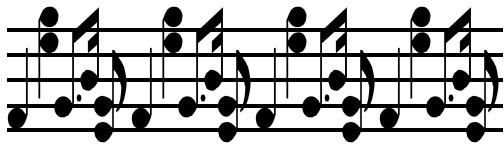
Wadsworth Band Newsletter



November 2004 P.O.Box 2 Wadsworth OH 44281

NEXT MEETING OF THE BAND BOOSTERS

Nov, 2 @ 7:30pm WHS Library **All Welcome** www.wadsworthband.com



Booster Corner

Submitted by Sally Lewis~Band Booster President

Concessions

The football and soccer seasons are wrapping up and our income from concessions has been very good. Everybody loves our food!

Thanks to everyone who has worked concessions during these games.

Basketball is right around the corner and we will need people to man the concession stands for these games. Concessions for basketball are not as busy/frantic as football. If you want to get your feet wet, this is a good time to do it.

Remember that by working in concessions you can earn money toward your son or daughter's account for the spring trip. For every hour you work, \$1.25 goes into the student's account – with a maximum of \$50.00. If you choose you can earn money toward another student's account after you have reached your son's or daughter's maximum.

November Student Fundraiser

This year's student fundraiser will begin on November 1st. The students will be provided with flyers and information to be taken home. Please look for these flyers at the beginning of November. This year the students will be selling fruit from Buehler's and items from Century Resources. The products will be delivered in the beginning of December. We all know and appreciate the fresh fruit available from Buehler's and Century Resources always provides quality products that are well received by the people purchasing the items.

The \$\$\$ from these sales also goes into the student's account.



Deepest Sympathy

The Band Booster Organization and friends wishes to express our deepest sympathy to Matt Wilks and his family on the passing away of his grandmother, Elsie Krska. Elsie will be remembered for her dedication she gave to the Band Boosters. She will be sorely missed.



Community Christmas Celebration Concert

Mark your calendar for Sunday, December 5th! That afternoon, at 4PM, the Wadsworth Community Band will present a Community Christmas Celebration concert in OJ Work Auditorium. Performing with the Community Band will be a special Community Christmas Choir under the direction of former Wadsworth High School Choir Director Gene Lawrence. Admission is free.

The program will feature traditional and seasonal favorites including *Procession of the Nobles* - Nikolai Rimsky-Korsakov, *Farandole from "L'Arlesienne Suite No. 2"* - Georges Bizet, *Russian Christmas Music* - Alfred Reed, *A Christmas Festival* - Leroy Anderson, and *March of the Toys* (as performed by the Sousa Band) - Victor Herbert. Members of the audience will also join in the fun with an old-fashioned sing-a-long of carols and other holiday tunes.

The concert will benefit the local service organization, FISH. FISH primarily helps individuals and families in need with food, transportation, and funds for rent and utility payments. At Christmas time FISH supports area families by providing them with baskets of food, clothing, and toys. The Wadsworth

Community Band has adopted a family, and will also be accepting donations on FISH's behalf of new children's clothing and toys from those attending the concert. In addition, a unique holiday basket and other seasonal items will be raffled off at the concert, with a portion of the proceeds going to FISH.

Kick off the holiday season with an enjoyable afternoon of music, while also contributing to the betterment of those in need in our community by providing a donation of a new child's toy or article of clothing, or through your participation in the raffle. We hope to see you on Sunday, December 5th at 4PM!



**NEXT BAND BOOSTERS MEETING: NOV.2 @
7:30 IN THE WHS LIBRARY.**

2004-2005 Band Booster Board Of Directors

2004-2005 WHS Band Booster Executive Board

Officers

President:	Sally Lewis	336-6009	slewis@neo.rr.com
Vice President:	Bill Bauer	336-1290	william.bauer@case.edu
Secretary:	Andrea Orchard	335-6053	aorchard@neo.rr.com
Treasurer:	Cindy Thomas	336-3038	cewingthomas@yahoo.com

Committee Chairs (who are members of the Executive Board)

Chaperone/Transportation	Dennis Burns
Concessions	Dave Thomas
Ways and Means	Beth Mollica-Hill

Additional Committee Chairs

Publicity:	Mark Sterling
Uniform:	Chriss Hadgis

Newsletter~Becky Motz 330-335-8032
bsmotz@earthlink.net

Newsletter deadlines are the 20th of every month.

Thank you to Mail Boxes Etc. for the printing and folding of the Wadsworth Band Newsletter

Why Music? Information About the Value of Music in Our Lives and Our Children's Education

Contributed by Dr. Bill Bauer

From *The Washington Post* ~ SCIENCE Notebook

<<http://www.washingtonpost.com/wp-dyn/articles/A45450-2004Aug29.html>>

Music Lessons and Kids' IQ

Music lessons trigger increases in the IQs of 6-year-old children, according to one of the most thorough studies on the subject.

Although previous research had hinted that musical training was associated with better literacy, math and spatial skills, much of it had compared children getting music lessons only with those getting none, leaving open the questions of whether children getting the lessons had certain family advantages to begin with, and of whether the improvements were the result of music specifically or just the result of structured, extracurricular training in an artistic skill.

A new study by E. Glenn Schallenberg at the University of Toronto addressed these questions by recruiting 144 6-year-olds into four groups: those receiving voice lessons, keyboard lessons, drama lessons and no lessons. (Kids in the last group were given free keyboard lessons after the study was completed.)

Children receiving the voice and keyboard lessons showed small but clear improvements on IQ tests, gaining an average of six and seven IQ points, respectively. Children receiving drama lessons had an increase of five points, while the children getting no lessons had an improvement of four points.

In a paper published in the current issue of *Psychological Science*, Schallenberg concludes that musical training in particular was responsible for the extra IQ points.

However, Schallenberg's study also revealed a unique advantage gained by the drama group: The young actors showed improvements in social skills that were not evident in the other groups.



The man that hath no music in himself,
Nor is not moved with concord of sweet sounds,
Is fit for treasons, stratagems, and spoils.
The motions of his spirit are dull as night,
And his affections dark as Erebus.
Let no such man be trusted.

---William Shakespeare